

ENCLOSED LIMIT SWITCHES SP9 SERIES

Features

- Compact and rugged Aluminum housing
- Large wiring enclosure
- High precision switch
- High repeatability of switching point
- Long service life
- Large breaking power
- Conduit opening available in:
 - M20: suffix -C
 - 1/2NPT: suffix -A

Definitions of Operating Characteristics

OF	Operating Force	PT	Pretravel
RF	Releasing Force	MD	Movement Differential
OT	Overtravel	OP	Operating Position
TT	Total Travel		

Specifications

Operating Speed	0.02mm-0.5m/sec
Operating Frequency	Mechanical: 120ops/min Electrical: 20 ops/min
Insulation Resistance	>100MΩ@500V DC
Contact Resistance	<25mΩ (initial value)
Rated Current/Voltage (UL file E321073)	SP9D/SP9Y 10A 125/250VAC, 2A 480VAC, 1/2HP 125/250VAC SP9S 15A, 1/2HP 125/250VAC
Dielectric Strength	1000VAC for 1 min between current carrying parts 2500VAC for 1 min between non-current carrying parts
Service Life	Mechanically 1.0 x10 ⁷ (operations) Electrically 5 x10 ⁵ (operations)
Operating Temperature	-25~+80°C (-13~176°F)
Humidity	< 95%RH
Degree of Protection	IP65/IP60

Selection Guide:

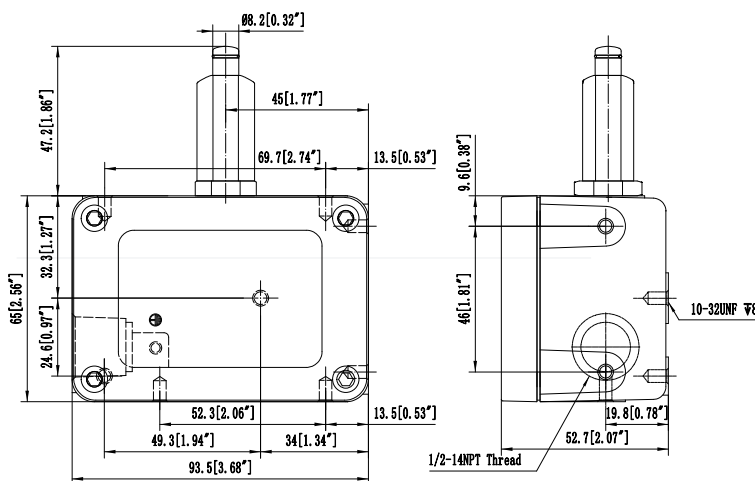
SP9	1	Q	-	11	-	A
	Current	Head Sealed		Head Styles (See Below)		Conduit
	1: 15A	Q: No Seal				A: 1/2NPT
	2: 20A	N: Sealed				B: PG13.5
	3: 25A					C: M20
	D: 10A 2NO/2NC					
	Y: 10A 2NP/2NC (Share common)					
	S: 15A (positive open NC contact)					



SP91-N04-A

Dimensions Unit: mm

SP9_Q11-A:



Operating Characteristics:

SP91:

- OF_{max} 13.3N
- PT_{max} 1.98mm
- OT_{min} 4.78mm
- DT_{max} 0.10mm
- OP 47.2±1.52mm

SP92/SP93:

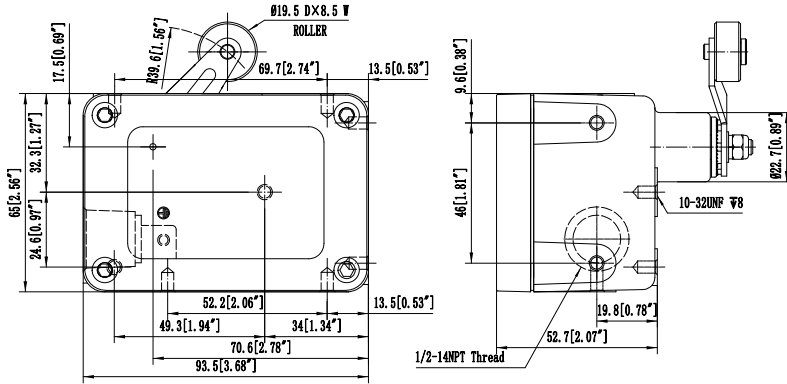
- OF_{max} 8.9N
- PT_{max} 1.27mm
- OT_{min} 3.18mm
- DT_{max} 0.23mm
- OP 46±1.52mm

SP9D/SP9Y:

- OF_{max} 13.3N
- PT_{max} 2.77mm
- OT_{min} 3.58mm
- DT_{max} 1.52mm
- OP 46±1.52mm

ENCLOSED LIMIT SWITCHES SP9 SERIES

SP9_-N04-A:



Operating Characteristics:

SP91:

- OF_{max} 5.56N
- PT_{max} 8°
- OT_{min} 90°
- DT_{max} 0.25°

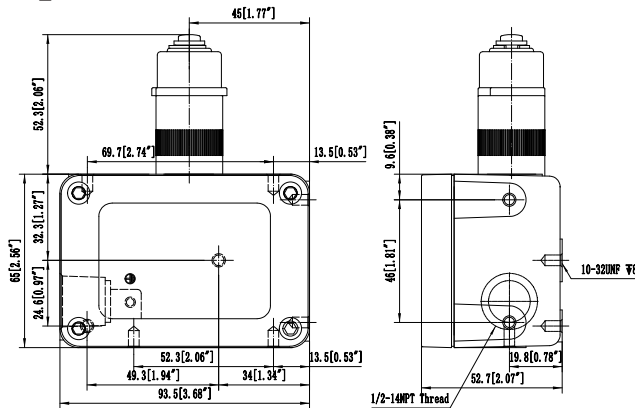
SP92/SP93:

- OF_{max} 8.9N
- PT_{max} 8°
- OT_{min} 25°
- DT_{max} 0.4°

SP9D/SP9Y:

- OF_{max} 6.67N
- PT_{max} 10°
- OT_{min} 25°
- DT_{max} 0.4°

SP9_-N11-A:



Operating Characteristics:

SP91:

- OF_{max} 15.5N
- PT_{max} 1.98mm
- OT_{min} 4.78mm
- DT_{max} 0.10mm
- OP 47.2*1.52mm

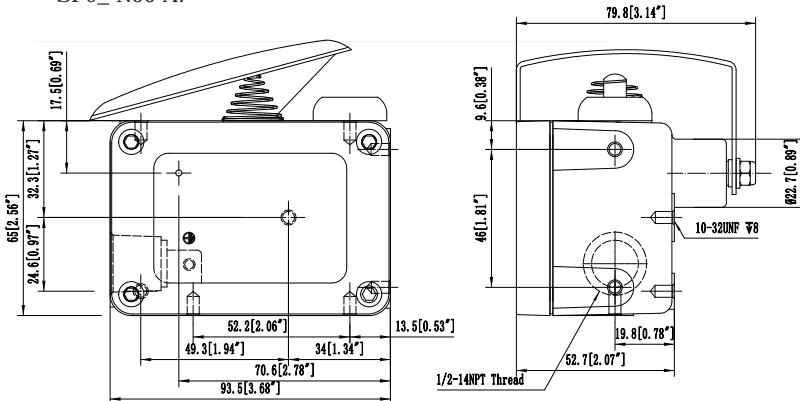
SP92/SP93:

- OF_{max} 11.1N
- PT_{max} 1.27mm
- OT_{min} 3.18mm
- DT_{max} 0.23mm
- OP 46*1.52mm

SP9D/SP9Y:

- OF_{max} 15.5N
- PT_{max} 2.77mm
- OT_{min} 3.58mm
- DT_{max} 1.52mm
- OP 46*1.52mm

SP9_-N06-A:



Operating Characteristics:

- OF_{max} 11.1N